

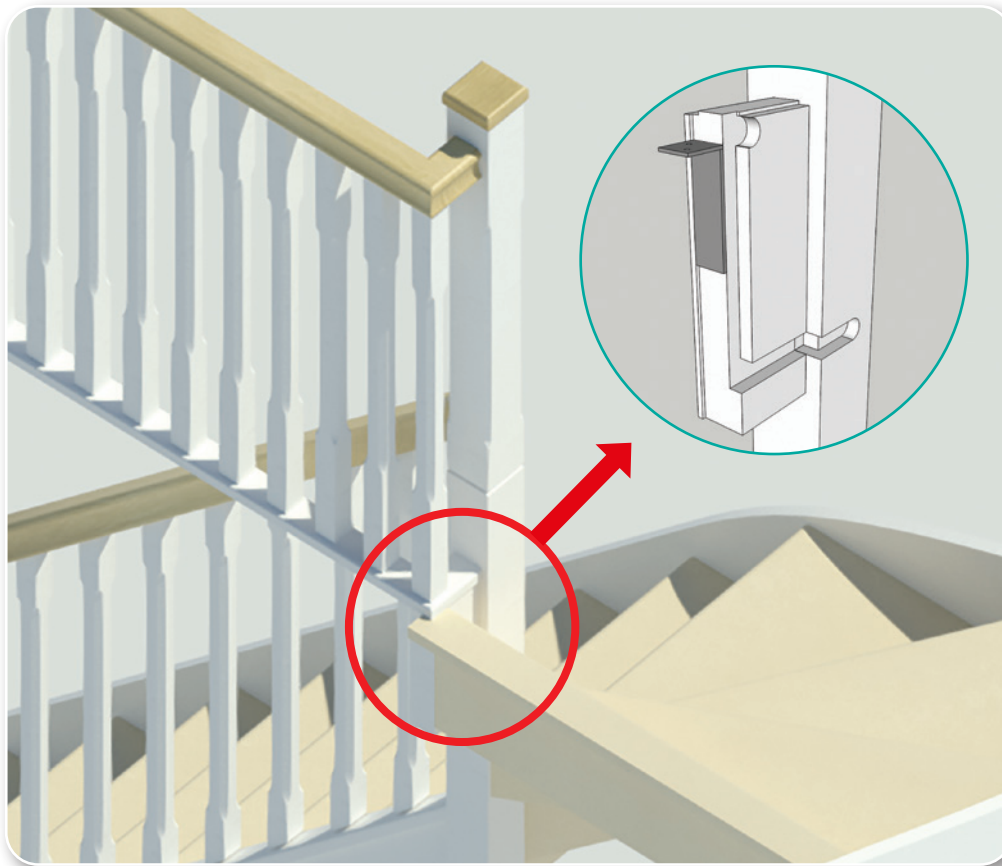


STAIRCRAFT
Group

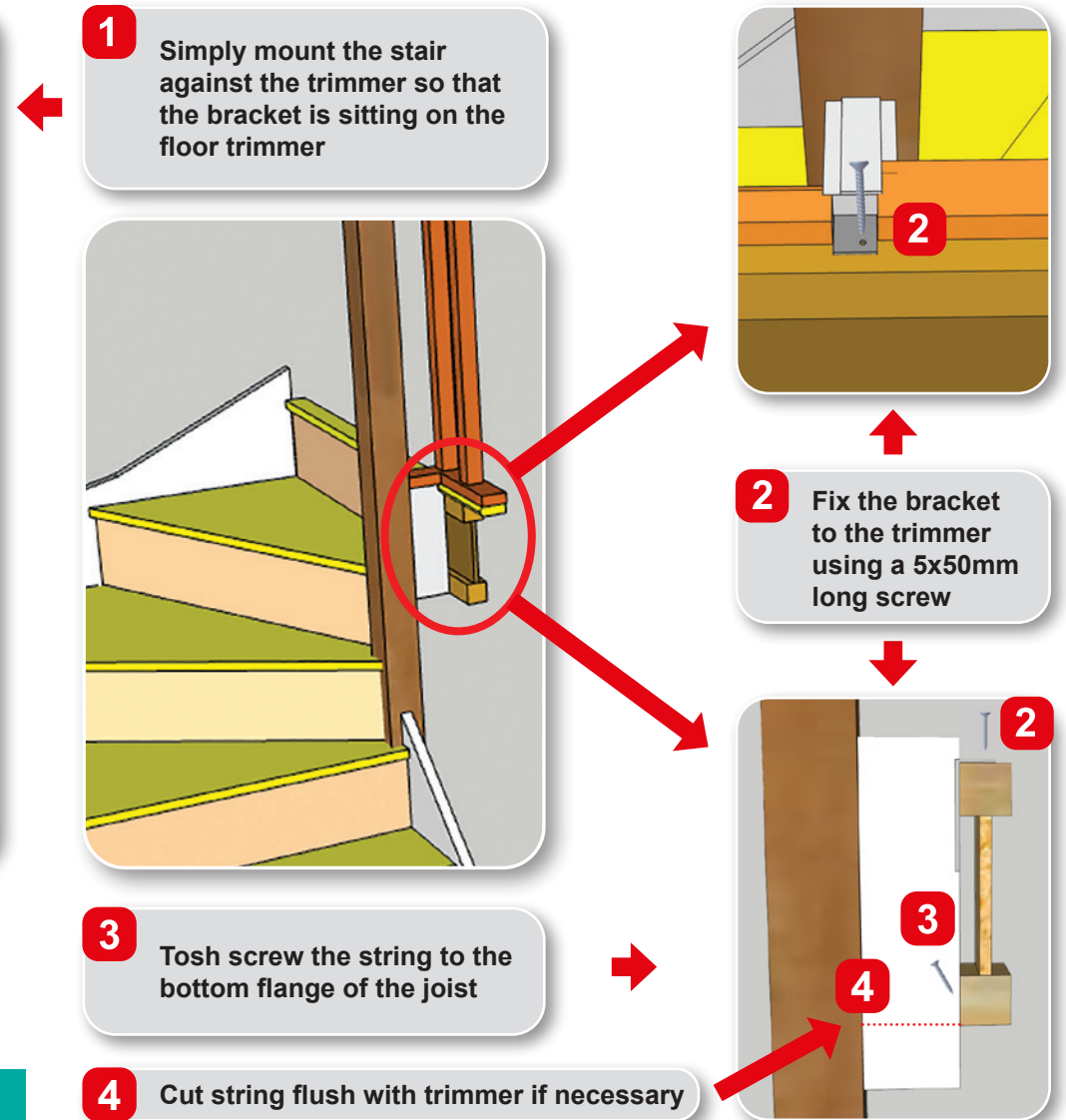
Top Winder Newel Post Installation Guide

Staircraft have introduced a new detail at the top of winder flights to simplify stair installation

In the new detail, a factory fixed short string section is extended off the winder newel post with a bracket incorporated to attach directly onto the adjacent floor trimmer. The landing balustrade will then return through 90° into this newel post.



The new string section and bracket is factory fixed to the winder newel post, reducing the number of components necessary to fix on site, and speeding up assembly.



More Stair Install Guidance Overleaf



Stair Fitting Issues – The Major Causes

Here are the most common reasons why correctly manufactured stairs may not fit when installed on site.

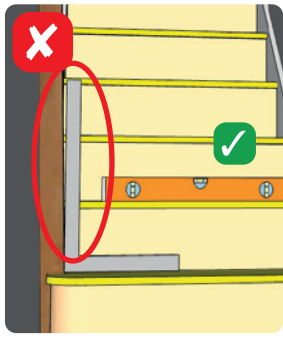
These will result in **extra time, damage, remedial works and customer care issues** to resolve. All the issues shown below will be due to the newel post being out of plumb.

PROBLEM 1

All Flights

The treads are level but the post is not square to the treads

The No.1 cause of stair fitting issues



THE CAUSE

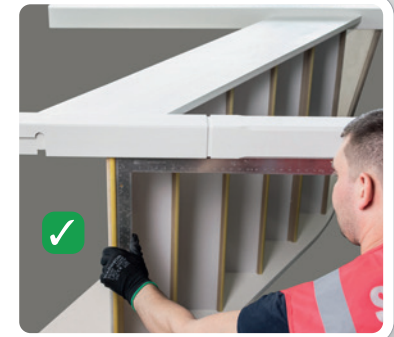
NEVER use a spirit level to square a newel during assembly – always use a roofing square



HOW TO AVOID

ALWAYS use a roofing square to square newels during assembly –

Visit www.staircraftgroup.com Resource Centre to view our Newel Post Install Guide

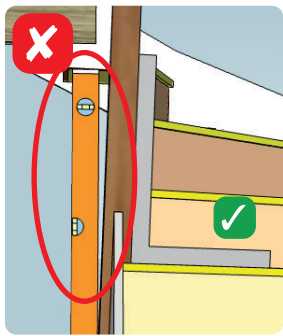


PROBLEM 2

On Winder Flights

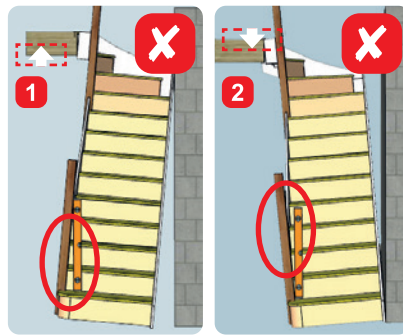
The post is square to the treads but the treads are not level from side to side (i.e the whole stair is out of plumb)

The No.2 cause of stair fitting issues



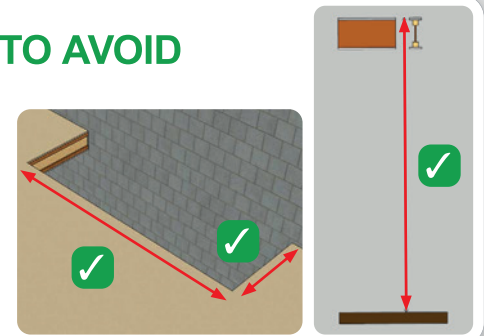
THE CAUSE

- 1 = Opening too small or FFL too high
- 2 = Opening too big or FFL too low



HOW TO AVOID

Check and confirm well opening size and finished floor height prior to manufacture

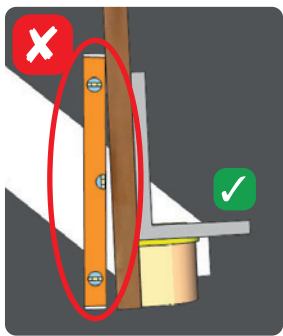


PROBLEM 3

On Straight Flights

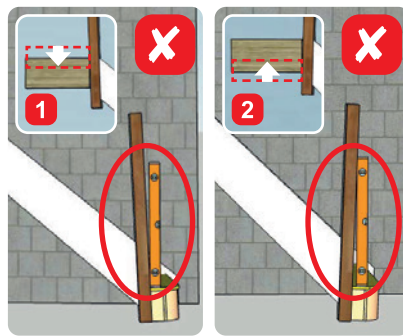
The post is square to the treads but the treads are not level from front to back (i.e the whole stair is out of plumb)

The No.3 cause of stair fitting issues



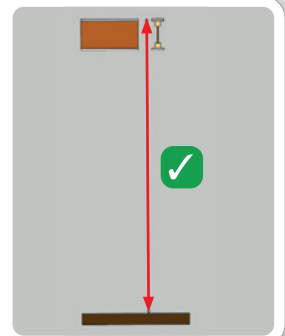
THE CAUSE

- 1 = Finished floor level too low
- 2 = Finished floor level too high



HOW TO AVOID

Check and confirm finished floor height prior to manufacture



To avoid these issues, contact us for a fully integrated stair and floor-kit design service.